

Astra Profile1200IP

IP65 1200W Moving Profile, with 7000K LED source, 5° - 50° zoom

ORDER CODE: **ASTRAPROF1200IP**



The **Astra** Profile1200IP is an advanced, large format IP65 LED moving profile, engineered to be bright and offer robust performance under any indoor and outdoor conditions.

This unit boasts a stunning 54.000 lumen (fixture output with goniometer), ensuring exceptional brightness.

The large 185mm front lens projects a full and consistent beam of light, adjustable from 5° to 50° via its motorized zoom system and precision internal optics being an ideal for use as key light.

The **Astra** Profile1200IP's comprehensive features include linear CMY+CTO color mixing and a dedicated color wheel, dual rotating gobo wheels and a 4-layer framing shutter system on individual planes and capable of producing a curtain effect. Additionally the effect section includes an animation wheel, dual frost filters, dual prism, and a motorized iris, enhancing its flexibility and creative potential.

For seamless integration and user convenience, the **Astra** Profile1200IP is equipped with CRMX wireless connectivity and supports multiple ethernet protocols, making it a versatile and user-friendly choice for various settings.

MAIN FEATURES

- 1200W White LED source 7000K, 54.000 lumen output
- 185 mm front lens with a 5°-50° zoom
- CMY+CTO Color mixing, one color wheel, 2 rotating gobo wheels, 4 framing shutters, 1 animation wheel, 2 frost, 2 prisms, iris
- IP65 ratio

TECHNICAL SPECIFICATION

LIGHT SOURCE

- Source: 1'400W White LED (driven @1'200W)
- CCT: 7.000K
- Luminous flux: (5,4°) 21'906 lm - (50,9°) 54'599 lm @Full
- Lux: (5,4°) 125'003 lx (50,9°) 4'008lx @5 m full
- CRI: > 70 (CRI > 90 with High CRI filter on color wheel)
- Source life expectancy: > 50.000 hrs (L70B10 @Ta 25° C / 77° F)

OPTICS

- Zoom range: 5,4° - 51° motorised linear zoom
- Lens diameter: 185mm / 7.28"
- Lens type: HD anti-reflection lenses with achromatic coating
- Focus: motorised

COLOUR SYSTEM

- Colour mixing: linear CMY
- CCT: linear CTO correction 2.700 K ~ 7.000 K
- Colour wheel: open + High CRI filter + 5 colour filters

DYNAMIC EFFECTS

- Control Resolution: 16-bit dimmer
- Shutter system: 4 shutter blades with position and $\pm 30^\circ$ angle adjustment, $\pm 45^\circ$ rotation of the complete framing system
- Animation wheel: animation wheel with CW and CCW rotation
- Rotating gobos: 6 rotating gobos + open, interchangeable, indexing
- Gobo size: preliminary data: outer: 30 mm - image: 25 mm - thickness: 1,1 mm
- Rotating gobos: 6 rotating gobos + open, interchangeable, indexing
- Gobo size: preliminary data: outer: 30 mm - image: 25 mm - thickness: 1,1 mm
- FX generator: prisms overlap for spectacular aerial effects
- Circular prism: 4f with bi-directional rotation, indexing
- Linear prism: 6f with bi-directional rotation, indexing
- Frost: dual frost filter, soft-edge and heavy (one interchangeable)
- Iris: 5 - 100% motorised iris

BODY

- Hardware on-board: ancor points on the front for accessory mounting
- Pan range: 540°
- Tilt range: 270°
- Pan/Tilt resolution: bit 8 / 16-bit
- Feedback: automatic repositioning after accidental movement
- Body: weatherproof IP65 construction
- Body colour: black

CONTROL

- Protocols: DMX512, RDM, ArtNet, sACN, CRMX
- DMX channels: 45channel
- Wireless Control: Included LumenRadio Timo Fx DMX/RDM receiver compatible with CRMX (Lumen Radio) and W-DMX (Wireless DMX)
- RDM: RDM for remote monitoring and settings
- Display: Graphic User Interface
- Firmware upgrade: via DMX with UPBOXPRO/UPBOX2 (USB-DMX interface not included) or via USB pen drive
- EtherFlow: Ethernet pass-through switch that preserves network connectivity even when the fixture is unpowered.

ELECTRONICS

- Dimmer: linear 0 ~ 100% electronic dimmer
- Dimmer curves: 4 selectable dimming modes available
- Strobe / shutter: 1 - 30 Hz, electronic
- Display battery: self-charging battery backup
- Operating temperature: -20° C / +45° C (-4° F / +113° F) Ta
- LED Control: flicker free frequency with adjustable PWM
- Selectable PWM: 600 ~ 50.000 Hz

ELECTRICAL

- Mains power supply: 100-240V - 50/60Hz
- Max power consumption: 1843W
- Standby power: 170 W
- Output (at 230V): 1 units on a single power line
- Power factor: > 0,96

PHYSICAL

- IP rating: IP65 for temporary outdoor use (*)
- Cooling: combination of heat pipe cooling system and low noise fan
- Suspension and fixing: any position with quick-lock omega brackets
- Pan / tilt lock: for transportation and maintenance
- Signal connection: IP65 Seetronic XLR 5p IN/OUT connectors
- Data connection: IP65 Art-Net RJ45 IN/OUT
- Power connection: Seetronic powerCON TRUE IP65 IN
- Dimensions (WxHxD): 490x877x310mm / 19.29"x34.53"x12.2"
- Weight: 55kg / 121.25lbs
- (*) NOTE: Suitable for permanent outdoor use, provided installation and maintenance cycles by qualified technicians are carried.

CERTIFICATIONS / APPROVALS

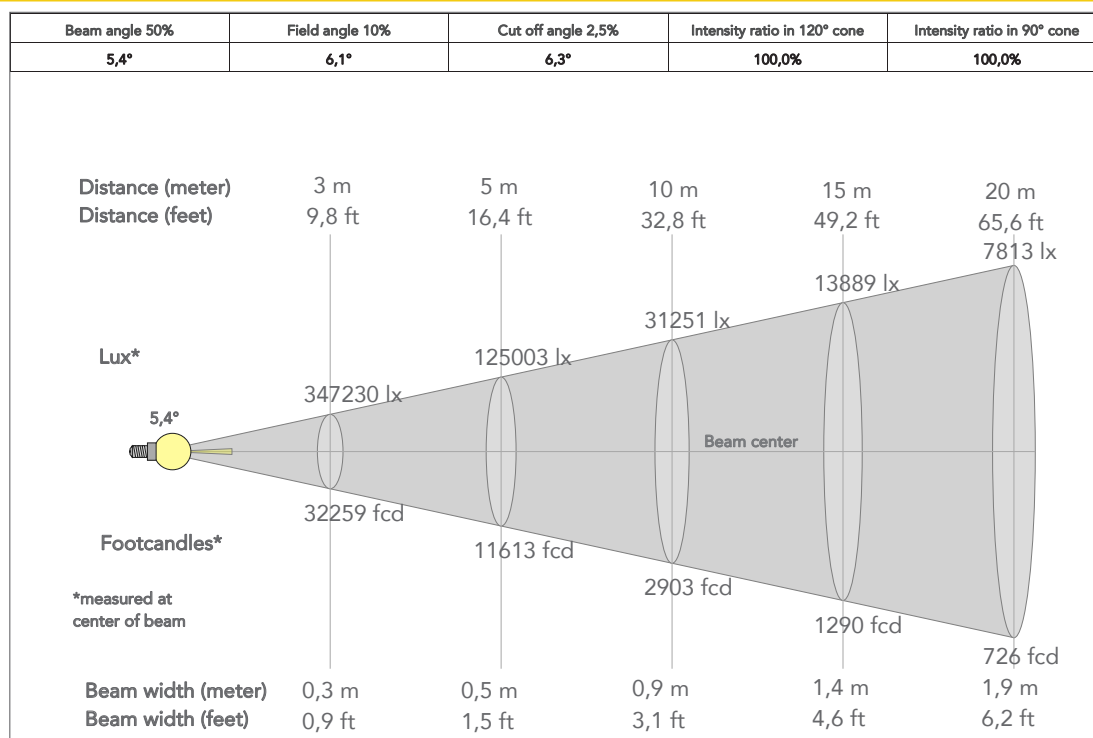
- Certifications / Approvals: CE, RCM

ACCESSORIES & RELATED PRODUCTS

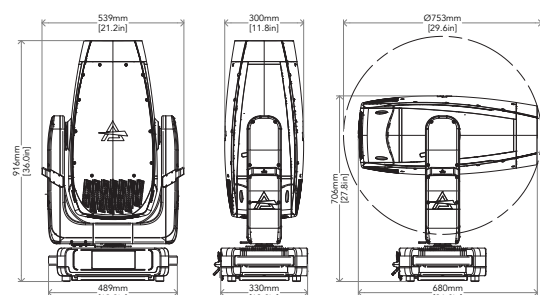
- FCLASTRAP1200IP Flight case for 1 pc of ASTRAPROF1200IP
- AP1200TRSKIT Camera assembly kit for tracking systems for ASTRAPROF1200IP
- IPTESTBOX Portable vacuum and pressure tester for ProLights IP fixtures
- AETHERBOX IP65 1 universe CRMX transceiver, DMX and Ethernet protocols, Wi-Fi, Bluetooth and battery ready
- AETHERBOXONE IP65 1x universe CRMX transceiver, DMX, Ethernet protocols, Wi-Fi, Bluetooth, battery-ready and PO
- AETHERBOXTWO IP65 2 universes CRMX transceiver, DMX and Ethernet protocols, Wi-Fi, Bluetooth, battery and POE
- C6002B Slim aluminum clamp, 200kg loading, 48-51mm tubes, M10 bolt, Black
- UPBOXPRO Firmware uploader kit, USB IN, 5-pin XLR DMX OUT connector

PRESET FULL ON

Beam angle 50%: 5,4°



TECHICAL DRAWINGS



CERTIFICATIONS / APPROVALS



Visit our website
for specifications and
tech documentations

PROLIGHTS is a trademark of
MUSIC & LIGHTS S.r.l.
musiclights.it

Via A. Olivetti snc
04026 - Minturno (LT) ITALY
Tel: +39 0771 72190

prolights.it
info@prolights.it